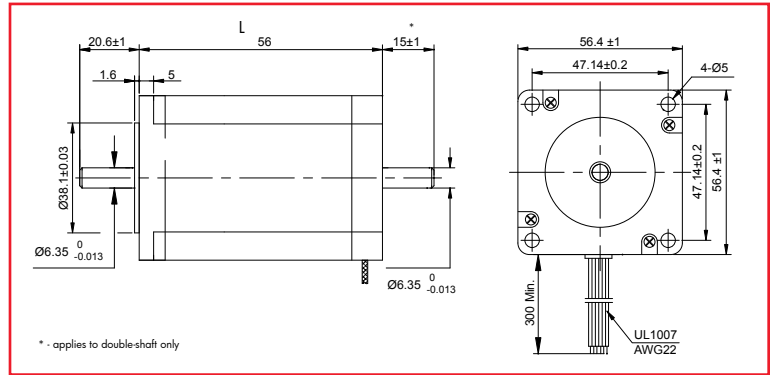




NEMA Size 23 hybrid stepper motors produce high torque in a small, RoHS compliant package. They are ideal for motion control applications where the benefits of smaller size with high torque are essential.

The NEMA Size 23 stepper motors measure only 23mm (2.24in) square by as little as 41mm (1.6in) long.



Model No.	Max. Length
PR57H-41	41mm
PR57H-76	76mm

Specification	
Motor Type	Hybrid
Ambient Temp. Range	-20° C to +50° C
Temperature Rise	80° C
Insulation Class	B

Specifications

Specification	Type Of Winding	Step Angle	Rated Voltage	Rated Current	Resistance	Inductance	Holding Torque	Rotor Inertia	Motor Length	Weight
Unit		°	V	A/Ø	ohm/Ø	mH/Ø	mN•m	kg•m ²	mm	g
PR57H-41-1008Jx	Bipolar (series)	1.8	7.98	0.70	11.4	26	550	120 x 10 ⁻⁷	41	450
PR57H-41-1008Jx	Bipolar (parallel)	1.8	3.92	1.40	2.8	6.5	550	120 x 10 ⁻⁷	41	450
PR57H-41-1008Mx	Bipolar (series)	0.9	7.98	0.70	11.4	32	550	120 x 10 ⁻⁷	41	450
PR57H-41-1008Mx	Bipolar (parallel)	0.9	3.92	1.40	2.8	8	550	120 x 10 ⁻⁷	41	450
PR57H-41-2008Jx	Bipolar (series)	1.8	3.92	1.40	2.8	5.6	550	120 x 10 ⁻⁷	41	450
PR57H-41-2008Jx	Bipolar (parallel)	1.8	1.96	2.80	0.7	1.4	550	120 x 10 ⁻⁷	41	450
PR57H-41-2008Mx	Bipolar (series)	0.9	3.92	1.40	2.8	8.8	550	120 x 10 ⁻⁷	41	450
PR57H-41-2008Mx	Bipolar (parallel)	0.9	1.96	2.80	0.7	2.2	550	120 x 10 ⁻⁷	41	450
PR57H-41-2804Jx	Bipolar	1.8	2	2.80	0.7	1.4	550	120 x 10 ⁻⁷	41	450
PR57H-41-2804Mx	Bipolar	0.9	2	2.80	0.7	2.2	550	120 x 10 ⁻⁷	41	450

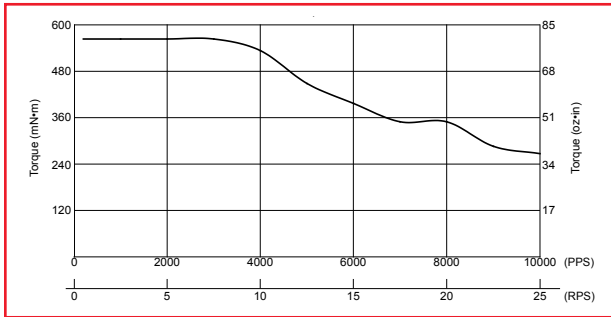
Specification	Type Of Winding	Step Angle	Rated Voltage	Rated Current	Resistance	Inductance	Holding Torque	Rotor Inertia	Motor Length	Weight
Unit		°	V	A/Ø	ohm/Ø	mH/Ø	mN•m	kg•m ²	mm	g
PR57H-51-2804Jx	Bipolar	1.8	2.3	2.80	0.83	2.2	1010	275 x 10 ⁻⁷	51	650
PR57H-56-1008Jx	Bipolar (series)	1.8	10.36	0.70	14.8	40	1260	300 x 10 ⁻⁷	56	700
PR57H-56-1008Jx	Bipolar (parallel)	1.8	5.18	1.40	3.7	10	1260	300 x 10 ⁻⁷	56	700
PR57H-56-1008Mx	Bipolar (series)	0.9	10.36	0.70	14.8	70	1260	300 x 10 ⁻⁷	56	700
PR57H-56-1008Mx	Bipolar (parallel)	0.9	5.18	1.40	3.7	17.5	1260	300 x 10 ⁻⁷	56	700
PR57H-56-2008Jx	Bipolar (series)	1.8	5.04	1.40	3.6	10	1260	300 x 10 ⁻⁷	56	700
PR57H-56-2008Jx	Bipolar (parallel)	1.8	2.52	2.80	0.9	2.5	1260	300 x 10 ⁻⁷	56	700
PR57H-56-2008Mx	Bipolar (series)	0.9	5.04	1.40	3.6	18	1260	300 x 10 ⁻⁷	56	700
PR57H-56-2008Mx	Bipolar (parallel)	0.9	2.52	2.80	0.9	4.5	1260	300 x 10 ⁻⁷	56	700
PR57H-56-2804Jx	Bipolar	1.8	2.5	2.80	0.9	2.5	1260	300 x 10 ⁻⁷	56	700
PR57H-56-2804Mx	Bipolar	0.9	2.5	2.80	0.9	4.5	1200	300 x 10 ⁻⁷	56	750

* - All hybrid motor specifications are based on full-step constant current operation
x represents shaft option, single (A) or double (B)



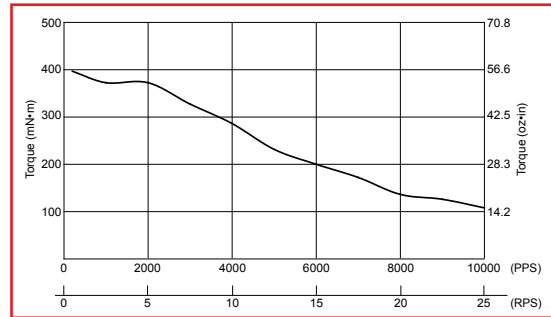
Torque Curves

PR57-41-2008JA/JB w/Bipolar Constant Current



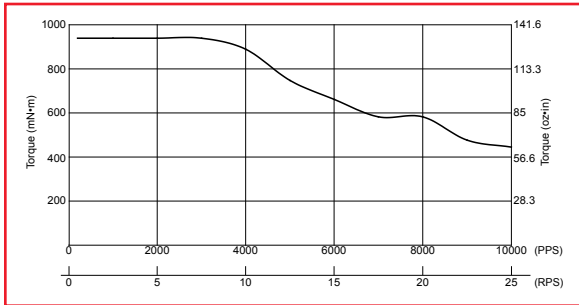
Excitation Mode: Half-step
Voltage: 30VDC
Current: 2.7A

PR57-41-2008MA/MB w/Bipolar Constant Current



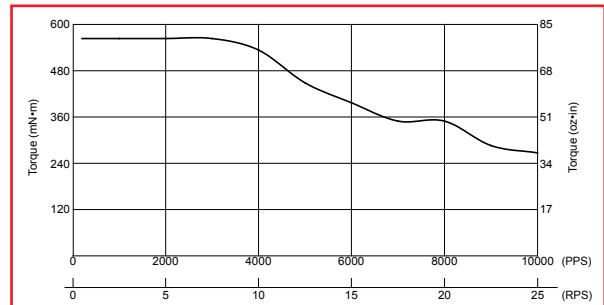
Excitation Mode: Full-step
Voltage: 30VDC
Current: 2.7A

PR57-41-2804MA/MB w/Bipolar Constant Current



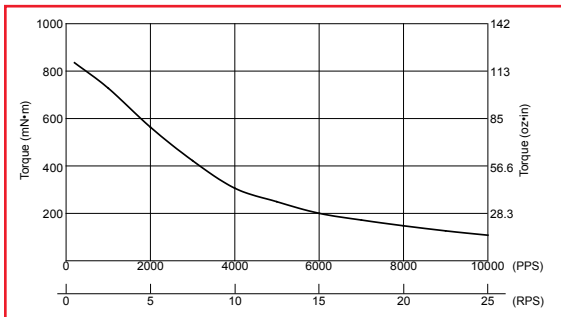
Excitation Mode: Full-step
Voltage: 30VDC
Current: 2.7A

PR57-41-2804JA/JB w/Bipolar Constant Current



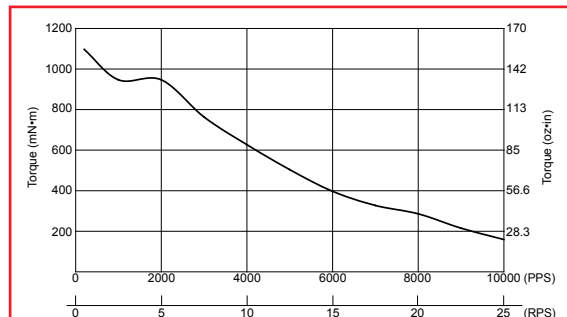
Excitation Mode: Half-step
Voltage: 30VDC
Current: 2.7A

PR57-56-2804MA/MB w/Bipolar Constant Current



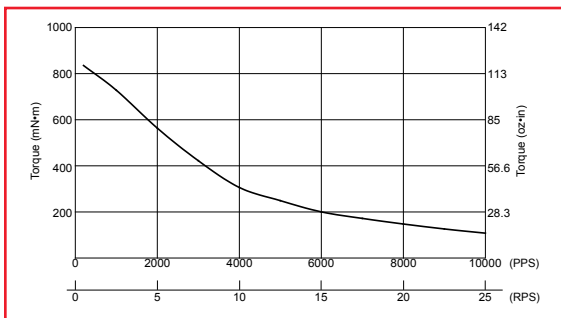
Excitation Mode: Full-step
Voltage: 30VDC
Current: 2.7A

PR57-56-2008JA/JB w/Bipolar Constant Current



Excitation Mode: Half-step
Voltage: 30VDC
Current: 2.68A

PR57-56-2008MA/MB w/Bipolar Constant Current



Excitation Mode: Half-step
Voltage: 30VDC
Current: 2.7A